

AMERICA'S FINEST CITY

GRAND | HYATT



TICKETS

Tickets to the following attractions are available through your Hyatt Concierge, payable by room charge: Old Town Trolley Tour, SEAL Tour, San Diego Zoo, San Diego Zoo Safari Park, Sea World, Legoland, Midway, and San Diego Harbor Excursions.

OLD TOWN TROLLEY TOUR

This wonderful tour is a great way to start off your visit to San Diego. Ride it continuously for a two-hour tour of the city or make a day out of it by getting off at any of the nine stops and then re-board to continue the tour.

SAN DIEGO ZOO

2920 Zoo Drive

The world-famous San Diego Zoo is one of the most requested attractions. Once inside, take the 35-minute bus tour to orient yourself and get a general overview of the park. *Travel time: 10 minutes by car.*

SEA WORLD

500 Seaworld Drive

Where else can you challenge thrill-a-second rides one minute and count the teeth on a shark the next? Feed the dolphins, take in an incredible performance, and just try to stay dry when the world famous Shamu comes a-splashing. *Travel Time: 15 minutes by car.*

SAN DIEGO ZOO SAFARI PARK

15500 San Pasqual Valley Road, Escondido

This unique wildlife reserve features animals of Africa and Asia roaming freely in 1,800 acres of natural habitat. Ride the Wagasa Bush Line Railway and explore the Heart of Africa. Walk through the Hidden Jungle, a replica of a tropical rain forest. *Travel Time: 50 minutes by car.*

SAN DIEGO CHILDREN'S MUSEUM

200 W Island Drive

NCM is a great place for young children to be encouraged to think, play and create. Some areas and activities are age specific—like Barn Dance for toddlers—while other parts of the Museum are designed to engage older visitors.

LEGOLAND

1 Legoland Drive, Carlsbad

A land of surprises around each colorful corner where everyone's imagination runs free. Discover kid- powered rides, cool building challenges, a unique mix of interactive attractions, exhilarating roller coasters, shows that pull the audience into the action, astonishing accurate and whimsical LEGO brick models and so much more. *Travel Time: 40 minutes by car.*

SEAL TOUR

It's a boat! It's a bus. It's San Diego's original amphibious Land and Sea Adventure. A 90-minute, fully-narrated sightseeing tour on land and on the sea of San Diego Bay.

BALBOA PARK

1549 El Prado

You can spend a couple of hours or a whole day exploring our historic park, the cultural heart of San Diego. More than 1,100 acres of museums, galleries, theaters, gardens, entertainment, and the World Famous San Diego Zoo. *Travel Time: 10 minutes by car.*

CORONADO

1201 1st Coronado

This is the island of the famous Hotel Del Coronado, as well as several quaint antique shops and cafes. Take the Ferry to the island, or drive over the Coronado Bridge for a panoramic view of the San Diego skyline. *Travel Time: 20 minutes by car.*



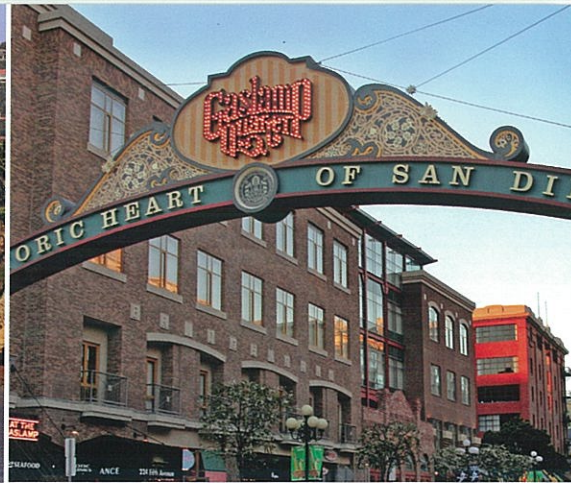
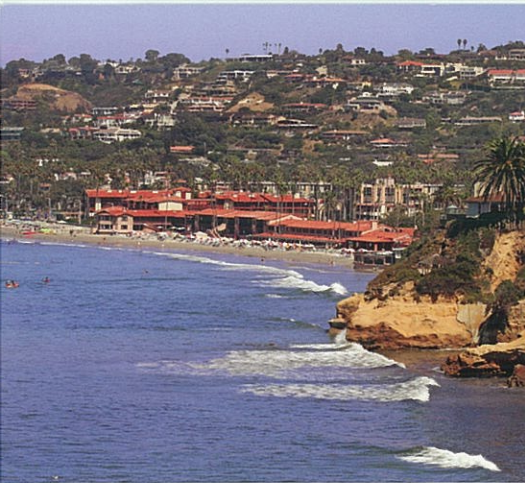
All travel times are approximate.

Manchester Grand Hyatt San Diego
1 Market Place
San Diego, CA 92101, USA

+1 619 232 1234 TELEPHONE
+1 619 233 6464 FAX

manchestergand.hyatt.com





LA JOLLA

1250 Prospect Street

“The Jewel” is a coastal community featuring upscale restaurants and boutiques, the La Jolla Museum of Contemporary Art, and a charming seaside park/beach. *Travel Time: 25-30 minutes by car.*

OLD TOWN

2461 San Diego Avenue

Part Mexican Village. Part colonial, part Victorian, it's one of the most visited state parks in the U.S. This is the site of the first Spanish settlement in California, and is the old “down town” area of San Diego. Try some of the best Mexican cuisine around, visit the monument, or shop for unique souvenirs. *Travel Time: 10-15 minutes by car.*

LITTLE ITALY

Little Italy is one of the more active downtown neighborhoods and has frequent festivals and events including a weekly farmers market, also known as the Mercato (the Market, in Italian). India Street, the commercial corridor, runs through heart of Little Italy, intermingled with high-density mixed-use buildings in a highly walkable area featuring some of the best Italian restaurants and Italian shops in San Diego. *Travel Time: 15 minute walk.*

HARBOR CRUISES

One and two hour narrated tours of the San Diego Harbor; offer views of the San Diego skyline, the Coronado bridge, the U.S. Navy fleet & shipyards, the Star of India (the oldest merchant ship afloat), and more. All available at the Broadway Pier. Whale Watching season mid-December through March. Dining cruises also available nightly.



CABRILLO NATIONAL MONUMENT

1800 Cabrillo Memoria Drive

This was the landing site of Juan Rodriguez Cabrillo; the Spanish explorer who discovered California in 1542. Located on the tip of a vast peninsula, this very historical and informative park offers a stunning panoramic view of the coastal areas. *Travel Time: 20 minutes by car.*

GASLAMP QUARTER

600 5th Avenue

Victorian architecture dominates this renovated historic area of downtown, named for the gas lamps that glowed in the late 19th century. This is where you will find the majority of our restaurants and nightclubs. *Travel Time: 10 minute walk.*

HORTON PLAZA

324 Horton Plaza

Downtown's main shopping mall is an interesting spot to visit even just for the unusual architectural design. Nordstrom and Macy's can be found here along with many other smaller shops and several places to eat. *Travel Time: 10 minute walk.*

SEAPORT VILLAGE

Located adjacent to the Hyatt, this harbor-side village offers unique shopping opportunities at the many specialized shops. Wander through the village and out onto Embarcadero Park for a leisurely stroll along the water. *Travel time: 3 minute walk.*

MIDWAY AIRCRAFT CARRIER

910 N Harbor Drive

Visit America's longest-serving aircraft carrier, just a brief walk along Harbor Drive. A Self Guided Tour takes you through 35 exhibits and displays of this “city at sea”. *Travel Time : 10-15 minute walk.*

OTHER

Your Hyatt Concierge can also help you with activities such as golfing, fishing, boating, hiking, biking, tours, car rentals, restaurant reservations, nightlife and more!

TRANSPORTATION

Taxis are readily available at the front drive of the hotel; see your Hyatt Doorman for assistance. Rental car information is available through your Hyatt Concierge. The Red San Diego Trolley Transit goes to many requested spots in the San Diego area. See your Hyatt Concierge for scheduling information and maps. Rent bikes through our local services.